

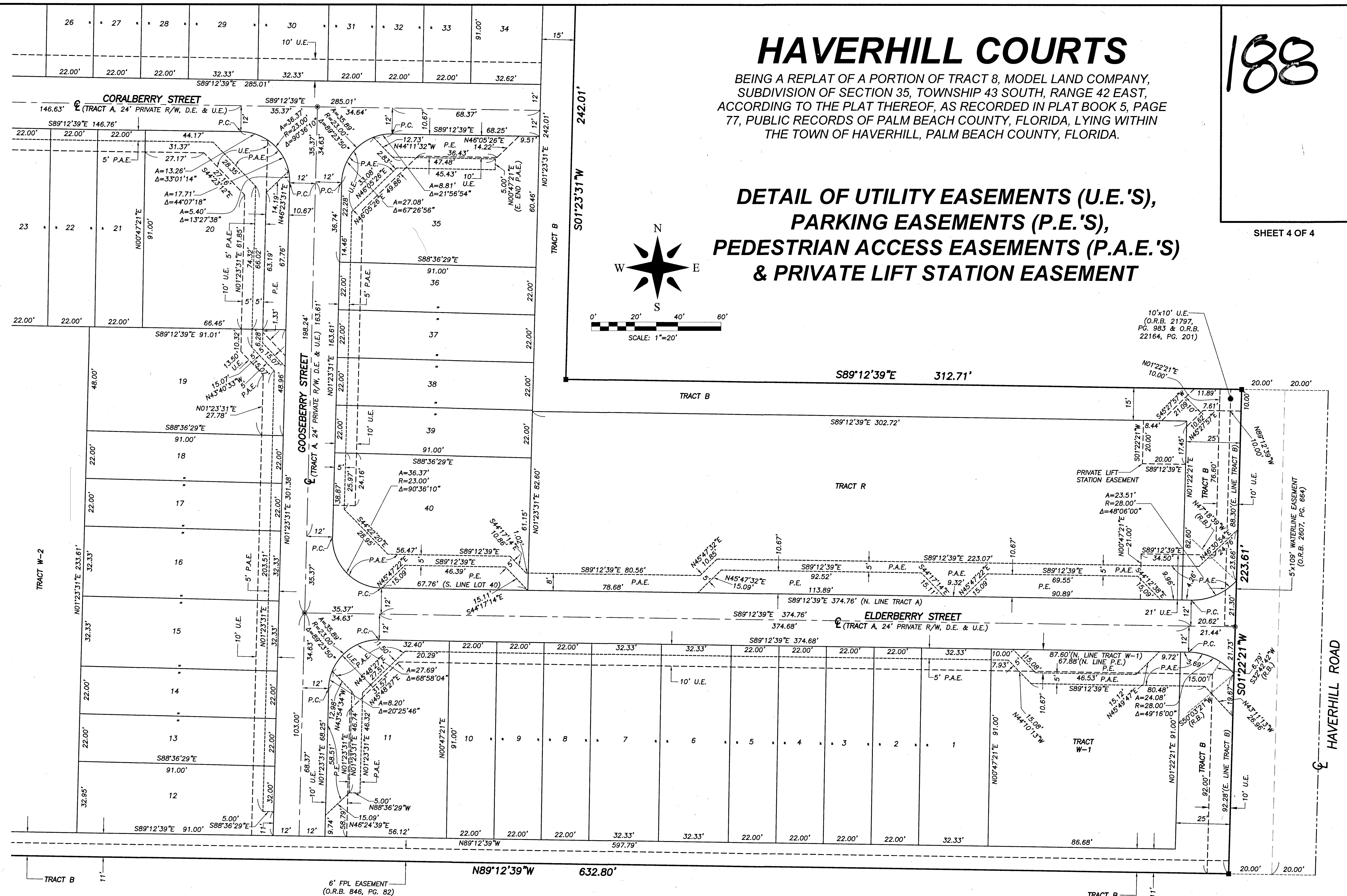
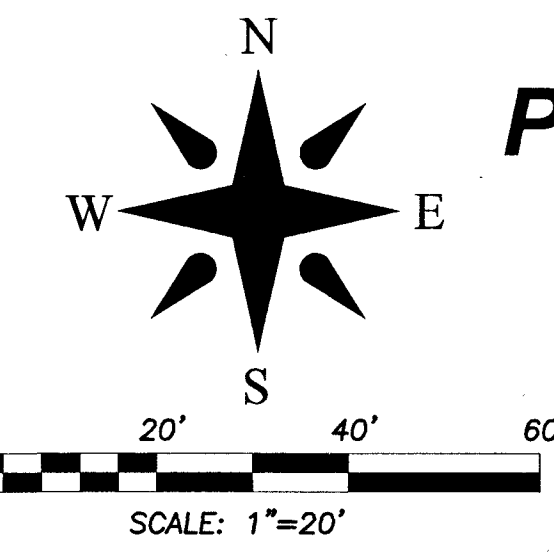
188

HAVERHILL COURTS

BEING A REPLAT OF A PORTION OF TRACT 8, MODEL LAND COMPANY, SUBDIVISION OF SECTION 35, TOWNSHIP 43 SOUTH, RANGE 42 EAST, ACCORDING TO THE PLAT THEREOF, AS RECORDED IN PLAT BOOK 5, PAGE 77, PUBLIC RECORDS OF PALM BEACH COUNTY, FLORIDA, LYING WITHIN THE TOWN OF HAVERHILL, PALM BEACH COUNTY, FLORIDA.

DETAIL OF UTILITY EASEMENTS (U.E.'S), PARKING EASEMENTS (P.E.'S), PEDESTRIAN ACCESS EASEMENTS (P.A.E.'S) & PRIVATE LIFT STATION EASEMENT

SHEET 4 OF 4



NOTICE:
This plat, as recorded in its graphic form, is the official depiction of the subdivided lands described herein and will in no circumstances be supplanted in authority by any other graphic or digital form of the plat. There may be additional restrictions that are not recorded on this plat that may be found in the Public Records of Palm Beach County.

THIS INSTRUMENT PREPARED BY:
ROBERT J. CAJAL IN THE OFFICE OF
WALLACE SURVEYING CORPORATION
5553 VILLAGE BOULEVARD
WEST PALM BEACH, FLORIDA 33407

WALLACE SURVEYING
CORP. LICENSED BUSINESS # 9999
5553 VILLAGE BOULEVARD, WEST PALM BEACH, FLORIDA 33407 (561) 640-4551

FIELD:	JOB No.: 18-1447.7	F.B.	PG.
OFFICE: R.C.	DATE: JANUARY 2023	DWG. No.: 18-1447-2	
C'K'D:	REF: 18-1447-1.DWG	SHEET 4 OF 4	